



ABOUT US

CENTER FOR PSYCHOLOGICAL & EDUCATIONAL ASSESSMENT

Since 2002, we are Atlanta-based psychologists and educational specialists specializing in customized assessments for learning and developmental challenges.

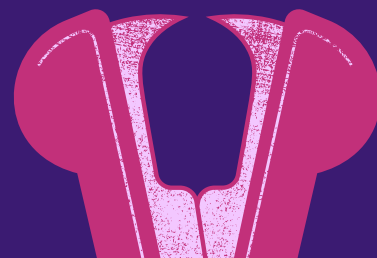
770-352-9952

WWW.ATLANTACHILDPSYCH.COM

108 MARGARET AVENUE
MARIETTA, GEORGIA 30060

519 MEMORIAL DRIVE, B-10
ATLANTA, GEORGIA 30312

*and
online!*



PSYCHOEDUCATIONAL TESTING VIA TELEHEALTH

WHY HAVE AN UPDATED ASSESSMENT?

Many of our clients performed well in school when they were younger, but as they mature and begin encountering new responsibilities as adults, their difficulties become more apparent. College, technical and graduate school come with a new set of challenges that may be tougher to manage than before. Alternatively, students may have had accommodations previously but need updated testing to maintain their support at the college and university level.

Academic accommodations are typically granted to those who meet criteria as defined by the American Disabilities Act (ADA; <https://www.ada.gov/>.) Individuals with ADHD and/or learning disorders who demonstrate functional impairment may qualify for supports such as extra time, note-taking assistance, priority class registration, course substitution and/or many other accommodations with the proper documentation.

CENTER FOR PSYCHOLOGICAL & EDUCATIONAL ASSESSMENT

PSYCH-ED TESTING FOR COLLEGE STUDENTS

online!



WWW.ED-TESTING.COM

CHALLENGES ADDRESSED

IN OUR ASSESSMENTS

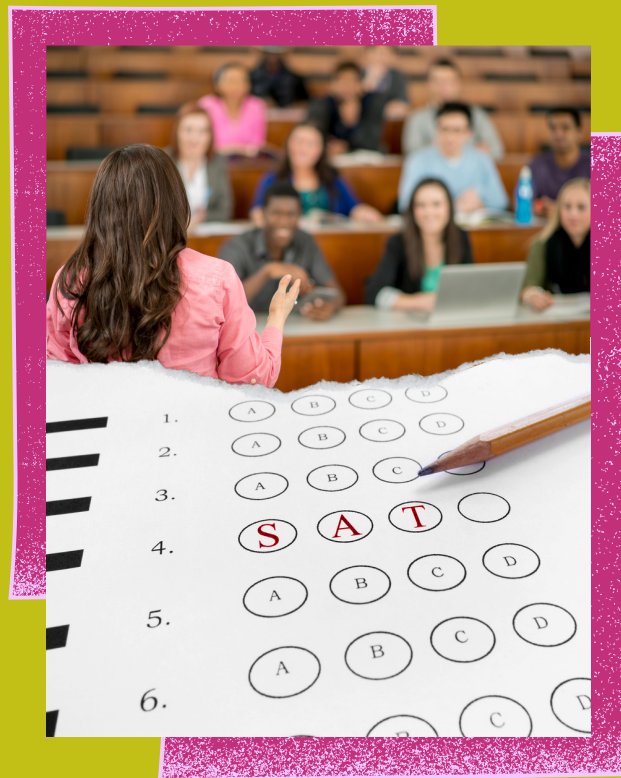
LEARNING
DISABILITIES

ATTENTION
DIFFICULTIES

COLLEGE
READINESS



CENTER FOR PSYCHOLOGICAL &
EDUCATIONAL ASSESSMENT



HOW MUCH DOES THE EVALUATION COST?

This assessment is specifically geared toward reevaluations for college students, so we can keep costs similar to those charged by university programs. The virtual assessment for individuals with a prior documented history of attention or learning disorders is **\$850**. This includes the virtual assessment with our experienced Educational Diagnostician, supervised by one of our Licensed Psychologists. Our psychologists will evaluate whether or not this type of evaluation may be appropriate for you when you contact our office.



WHAT CRITERIA DO I NEED TO MEET?

- A high school senior or current college, technical or university (undergrad, graduate, medical or law school) student
- 18 or older
- You were identified when you were in elementary, middle or high school as having ADHD or a Learning Disorder
- You can provide prior documentation (past psychoeducational report, IEP or 504 plan)

WHY VIRTUAL?

Many of our previous clients had difficulty getting a reevaluation from their school providers in a timely manner, given long waitlists. Traveling to our office has also been difficult to schedule. Since the pandemic, online testing platforms have made telehealth assessments possible, and studies have indicated that results are equivalent to in-person testing.

Of course, you are also welcome to visit us at our Atlanta and Marietta locations!

WWW.ED-TESTING.COM